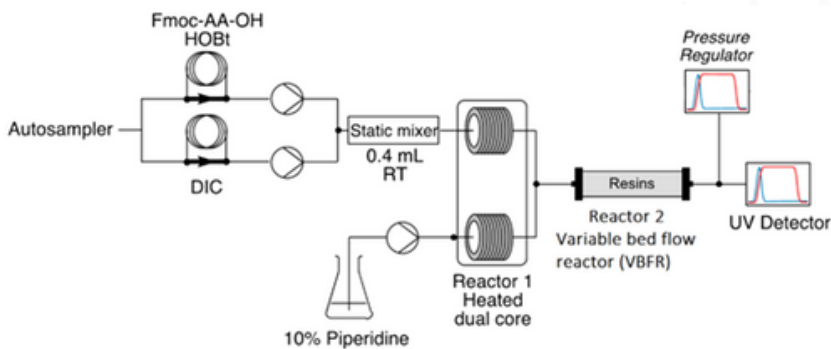
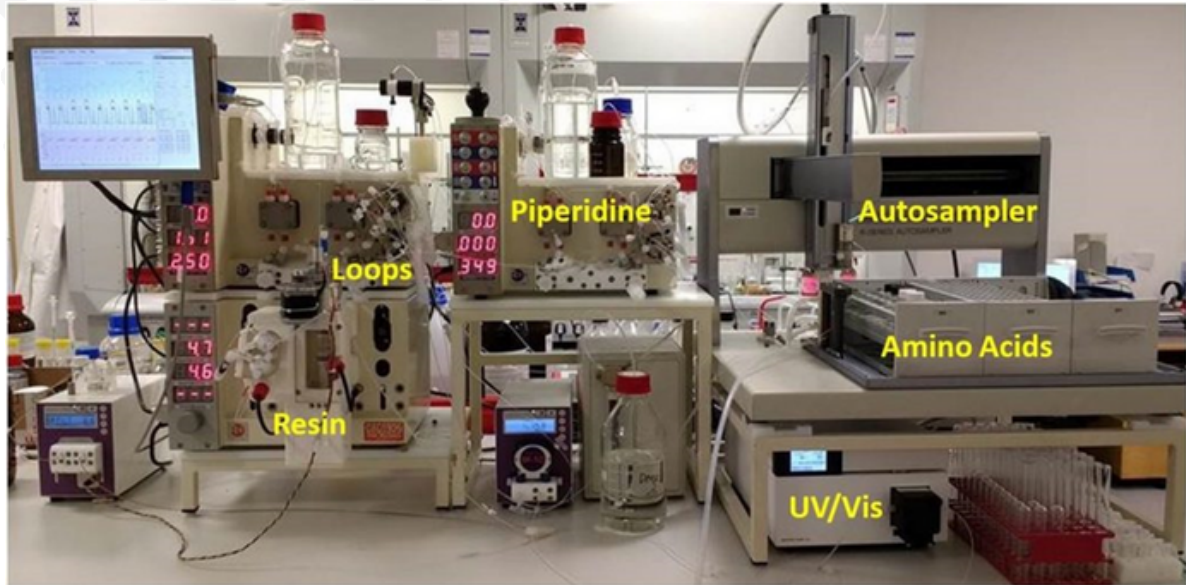
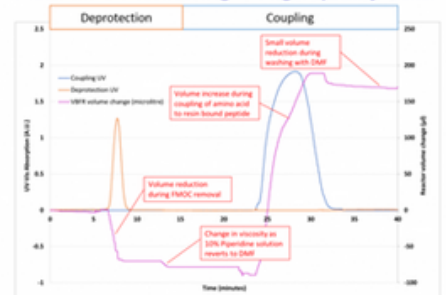


連續式胜肽合成系統

CONTINUOUS FLOW-BASED SOLID-PHASE PEPTIDE SYNTHESISER

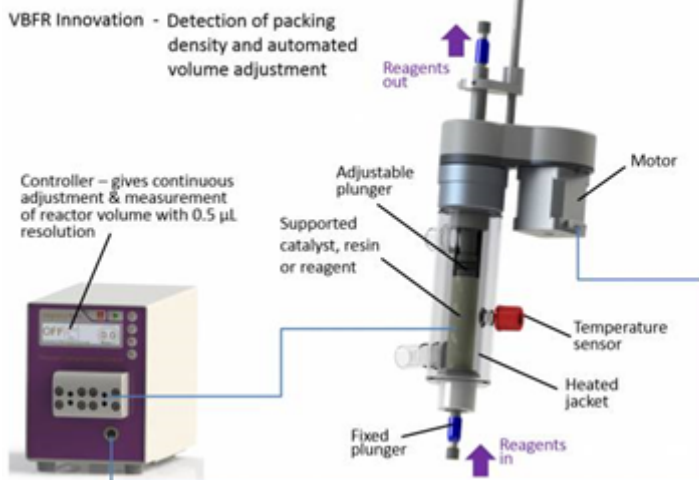


Real time monitoring – High quality data



Variable Bed Flow Reactor (VBFR)

可調式固定床反應器



- 隨時自動調整反應器容積，避免 Resin 因體積脹大而破損，影響產出
- 有三種不同體機反應器可供挑選，操作體積 0.3 ml 到 21 ml
- 適用 Resin 充填量：50 mg 到 2 g
- 反應溫度最高可達 100 °C
- 最高可操作壓力：20 bar

更多相關資訊，請洽和特科技



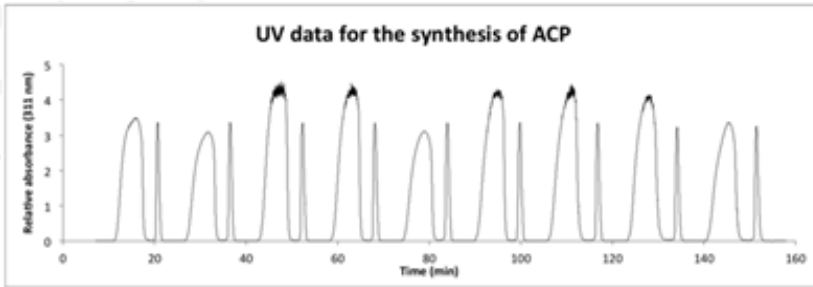
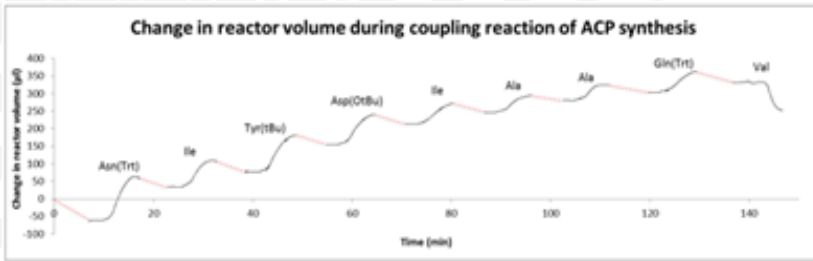


Figure 5 – UV data for synthesis of ACP.

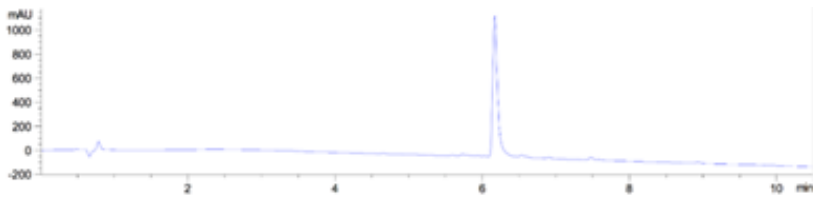


Figure 8 - HPLC trace of crude ACP (Entry 5, Table 1). Gradient = 5–40% B over 10 min. Purity = 93.7%.



- 高再現性

More repeatable, predictable and consistent synthesis by virtue of precise temperature control and reproducible mixing.

- 高純度

Higher purity peptides. In flow peptide synthesis using the VBFR the resin is constrained, even if couplings are incomplete the synthesis is biased towards the desired peptide, this is not the case with the agitated resin in a batch reaction where the position of each resin bead is changing throughout the synthesis. See this link for an illustration of this important difference.

- 符合不同長度的peptide合成需求 (50 to 120 mer)

Access to longer peptides and small proteins, e.g. 50 to 120 mer

- 合成週期時間加快

Faster coupling-deprotection-wash cycles

- 溶劑消耗量降低

Consumption of solvents for resin washing is reduced

- 減少試劑消耗量

Lower excesses of valuable reagents are required

- 反應數據即時掌握

Higher quality real-time data generated including resin volume change

